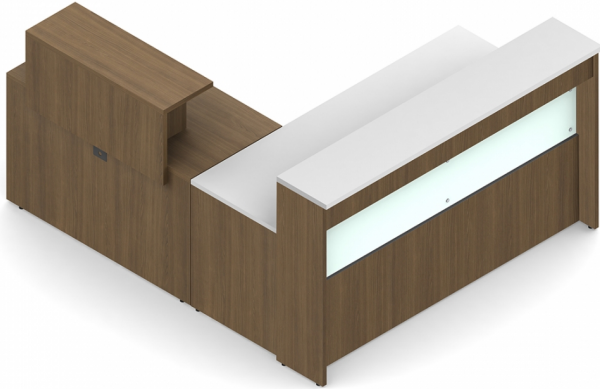


## MLP633

Ionic | Reception Suite - 72"W x 84.5"D  
x 42"H overall



- Ionic offers practical solutions for a wide range of workplace applications
- Mix and match components are easy to configure
- Constructed from commercial grade materials and hardware
- Canadian made and built to last



### Package Includes:

ML72MRD : Reception Desk

ML4824R : Return

ML36RT : Reception Desk Top Storage

### Specifications

Weight: 435 lbs / 197.3 kg

Volume: 38.5 ft<sup>3</sup> / 1.09 m<sup>3</sup>

### Environmental Certificates



[Ionic](#)